



# MONTHLY MEMBERSHIP PROGRESS REPORT

District 29 I

Results as of: 04/30/2019

GMT: CINDY GREGG

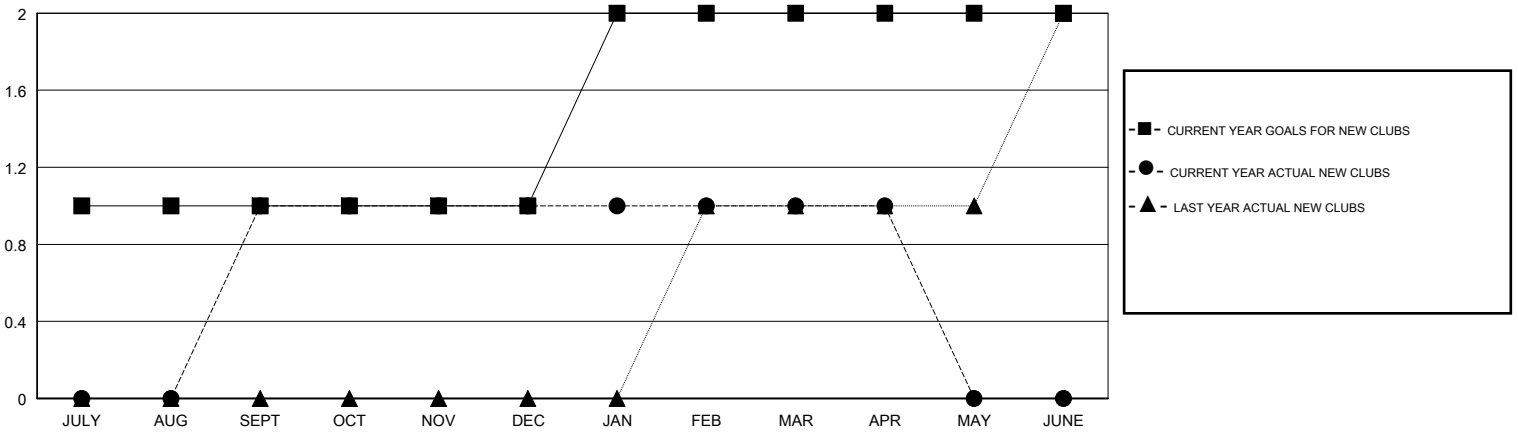
LOCATION WEST VIRGINIA

GMT CA

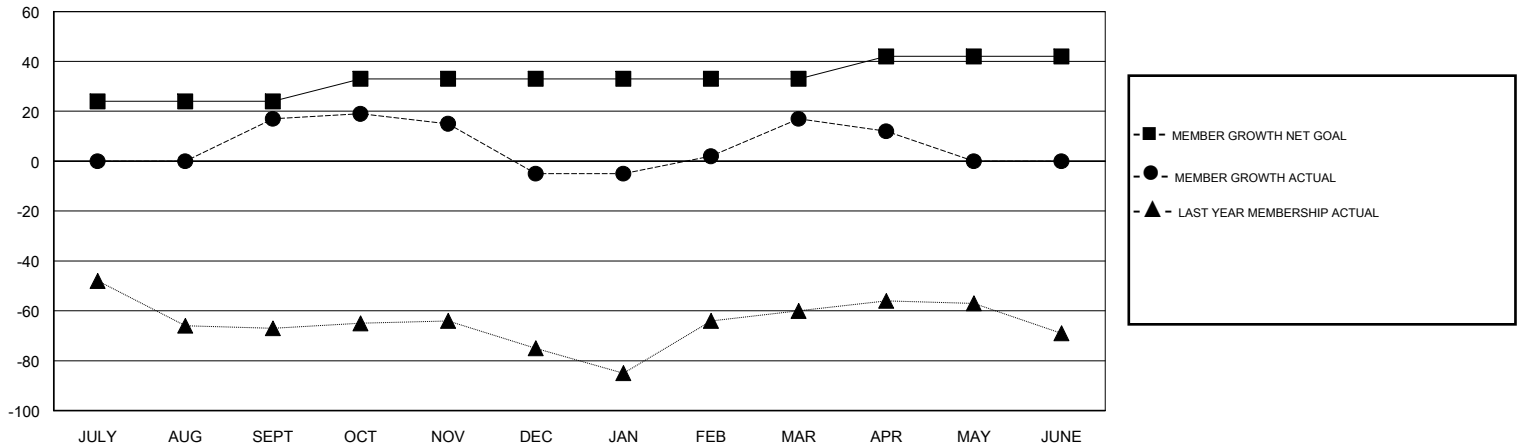
| Clubs                 |               |           |               |
|-----------------------|---------------|-----------|---------------|
| RESULTS FOR 2018-2019 |               |           |               |
| QUARTER               | NEW CLUB GOAL | NEW CLUBS | DROPPED CLUBS |
| JULY/AUG/SEPT         | 1             | 1         | 0             |
| OCT/NOV/DEC           | 0             | 0         | 0             |
| JAN/FEB/MAR           | 1             | 0         | 0             |
| APR/MAY/JUNE          | 0             | 0         | 0             |

| Members               |                        |                      |  |
|-----------------------|------------------------|----------------------|--|
| RESULTS FOR 2018-2019 |                        |                      |  |
| QUARTER               | MEMBER GROWTH NET GOAL | MEMBER GROWTH ACTUAL | DROPPED MEMBERS ACTUAL (including transfers) |
| JULY/AUG/SEPT         | 24                     | 42                   | 20   |
| OCT/NOV/DEC           | 9                      | 24                   | 41   |
| JAN/FEB/MAR           | 0                      | 36                   | 14   |
| APR/MAY/JUNE          | 9                      | 7                    | 12   |

GOALS AND ACTUAL NEW CLUBS CUMULATIVE



GOALS AND ACTUAL MEMBERS CUMULATIVE



|                  |
|------------------|
| DROPPED CLUBS: 0 |
|------------------|

33 CLUBS OF 58 ADDED 1 OR MORE NEW MEMBERS

| GENDER DISTRIBUTION                    |                |
|--|----------------|
| MALE                                   | 1,050 (65.54%) |
| FEMALE                                 | 552 (34.46%)   |
| Women Percentage Fiscal Year Goal: 36% |                |

| DROPPED MEMBERS |           |
|-----------------|-----------|
| DECEASED        | 23        |
| CLUB CANCELLED  | 0         |
| OTHER           | 64        |
| <b>TOTAL</b>    | <b>87</b> |

[CLICK HERE FOR CUMULATIVE MEMBERSHIP DATA](#)

|                                 |     |
|---------------------------------|-----|
| TOTAL FAMILY UNIT MEMBERS       | 490 |
| FAMILY MEMBERS PAYING HALF DUES | 248 |